

MB-DT



These special illuminators provide intense, evenly diffused illumination. The Diffused Tube light is ideal for inspection of reflective, specular, rough or topographic surfaces. Optical grade reflector coating returns 99.9% of light for optimum diffused output.



FEATURES

- High intensity and uniform, non-directional illumination across the entire lighting hemisphere
- Ideal for highly reflective surfaces and textured or topographic objects
- LED thermal management for stable performance
- Provides cloudy day illumination, minimizing shadows and glare
- Flicker free performance and instant start up with Metaphase analog driver technology
- Enclosed workspace blocks interference of ambient light
- Optical grade reflector coating reflects 99.9% of light for optimum diffused output
- Built-in Constant Current Driver with 0 – 10VDC intensity control, compatible with DDC-3 and ILD-35 Dimmers

WAVELENGTHS

Order ID	Description / nanometers
W	White (6000K), Nominal
IR05	Infrared / 1050nm
IR20	Infrared / 1200nm
IR30	Infrared / 1300nm
IR45	Infrared / 1450nm
IR55	Infrared / 1550nm
IR65	Infrared / 1650nm

GENERAL SPECIFICATIONS

Power Source:	24VDC ±5%
Cable (Standard):	10-foot cable with flying leads
Housing:	Black Anodized Aluminum
Ambient Temp:	-20°C to 40°C

MB-DT

Diffused Tube Lights								
MODEL*	Outer Dimensions: W x L x H Inches (cm)	Bottom Opening (Active Area) W x L Inches (cm)	Camera Slot Length Inches (cm)	Weight lbs (Kg)	Cable QTY	Cable Length	Standard Cable Description	Typical Current @24VDC (White)
MB-DT216	10.84 x 11.00 x 5.13 (27.53 x 28.00 x 13.02)	6.84 x 10.00 (17.37 x 25.40)	3.75 (9.52)	2.8 (1.27)	1	10ft	24 AWG 4 Conductor	1.1A
MB-DT306	10.84 x 17.75 x 5.13 (27.53 x 45.08 x 13.02)	6.84 x 16.75 (17.37 x 42.54)	10.0 (25.40)	4.5 (2.04)			18 AWG 4 Conductor	2.0A
MB-DT406	10.84 x 28.90 x 5.13 (27.53 x 73.41 x 13.02)	6.84 x 27.90 (17.37 x 70.87)	21.16 (53.73)	7.3 (3.31)			18 AWG	3.5A
MB-DT506	10.84 x 38.50 x 5.13 (27.53 x 97.79 x 13.02)	6.84 x 37.50 (17.37 x 95.25)	33.60 (85.34)	9.8 (4.44)			6 Conductor	5.0A

*Custom sizes and configurations available

MB-DT

Wiring (4 conductors, flying leads)**	
Wire Color	Function
RED	+24VDC
WHITE	0-10VDC INTENSITY CONTROL
BLACK	GROUND (24V RTN)
GREEN	SIGNAL GROUND

Wiring (4 conductors, without Intensity Control)	
Wire Color	Function
RED	+24VDC
WHITE	+24VDC
BLACK	GROUND (24V RTN)
GREEN	GROUND (24V RTN)

Wiring (6 conductors, flying leads)**	
Wire Color	Function
RED, BROWN	+24VDC
YELLOW	SIGNAL GROUND
BLACK, BLUE	GROUND (24V RTN)
ORANGE	0-10VDC INTENSITY CONTROL

When not using Intensity Control, connect the 0-10V control line to +24VDC and connect Signal Ground to Ground (24V RTN)

Wiring (6 conductors, without Intensity Control)	
Wire Color	Function
RED	+24VDC
BROWN	+24VDC
ORANGE	+24VDC
BLACK	GROUND (24V RTN)
BLUE	GROUND (24V RTN)
YELLOW	GROUND (24V RTN)

M12 (5 position male)**	
Pin #	Function
1	+24VDC
2	0-10VDC Intensity Control
3	GROUND (24V RTN)
4	SIGNAL GROUND
5	No Connection

The M12 connector option is not recommended for lights rated more than 4 amps

Wiring with ULC-2	
Wire Color	Function
RED, WHITE (+)	LED INPUT
BLACK, GREEN (-)	

Terminated within a 2 position ULC-2 output connector (Phoenix Contact P/N: BCP-508-2)

**Note: The 0-10VDC Intensity Control input can accept voltages from 0-24VDC where the light will operate at full intensity in the 10-24VDC range. The light is proportionally dimmer for any Intensity Control voltage less than 10VDC and the light is OFF at approximately 0V or not connected (floating).

MB-DT

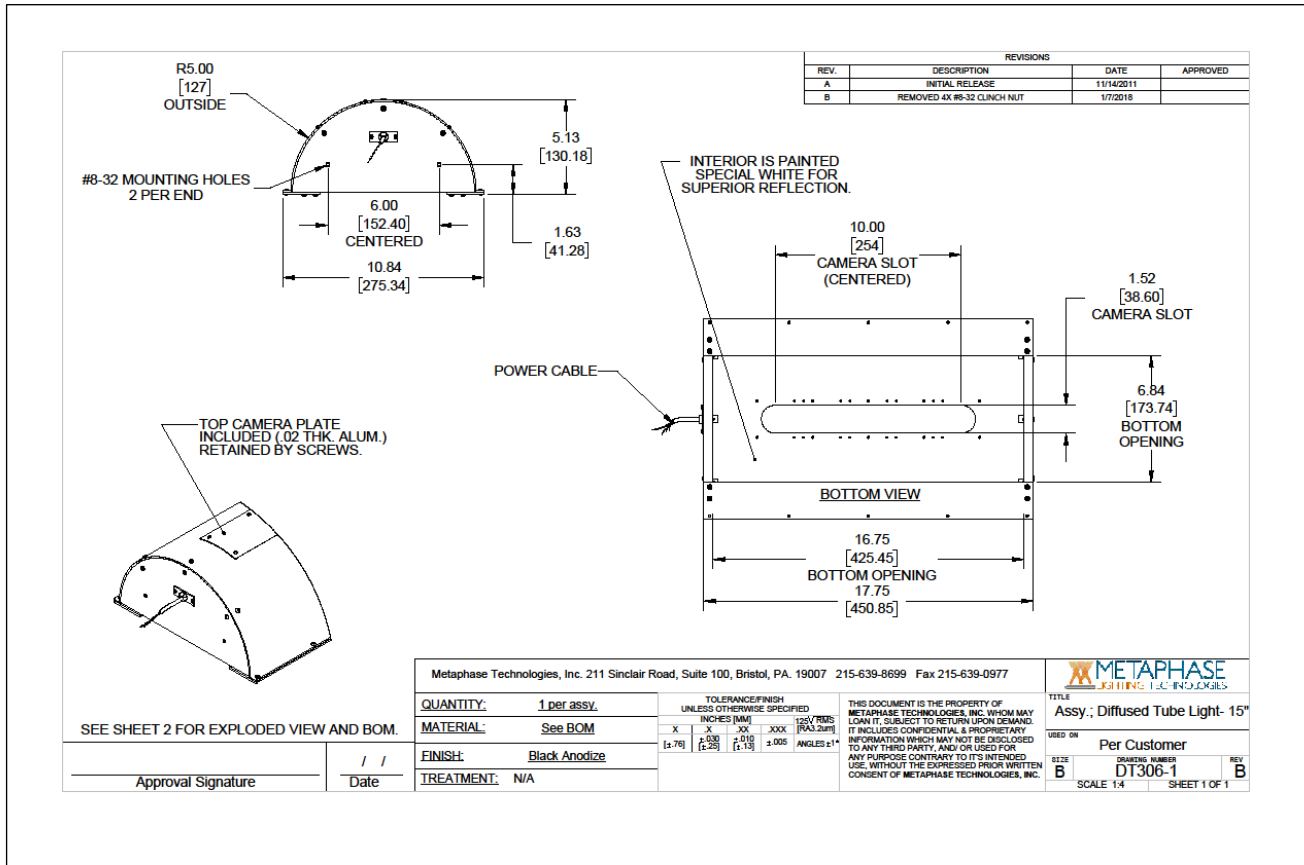
PART NUMBER KEY									
MODEL	SIZE (active area length)	-	WAVELENGTH	-	DRIVER* (most common)	-	CABLE LENGTH	-	CONN.** (most common)
MB-DT	XXX	-	XXXXX	-	XXXXXXX	-	XXX	-	XXXX
MB-DT	216 (5x10") 306 (5x15") 406 (5x25") 506 (5x35")		W (White 6000K, Nominal) IR05 (Infrared 1050nm) IR20 (Infrared 1200nm) IR30 (Infrared 1300nm) IR45 (Infrared 1450nm) IR55 (Infrared 1550nm) IR65 (Infrared 1650nm)		24Z 24Z-TRG 24-ILSXXX 24-ILD U¹		5M 10M Length can be customized: ex.7M=7meters Select or leave blank for 3 meters		M12D^{1 2} Select or leave blank for flying leads
Example 1: MB-DT306-WIR20-24Z Example 2: MB-DT506-IR55-24-ILD					¹ Not available in lights exceeding 4A input current ² Default cable length for an M12D connector is 19 inches				

Contact Metaphase Technologies or your local representative for options such as custom diffusers, lenses, polarizers, IP-rated enclosures for harsh environments, higher intensity, custom wavelengths, higher uniformity, etc. Not all options are available for all lights.

Link to [*Driver Options Key](#) / [**Connector Options Key](#)

MB-DT

Sample Part Number: **MB-DT306-WIR20-24Z**



COMPLIANCE



CONTACT US

Contact Metaphase Technologies at **215-639-8699** or your local representative for additional details, options and customizations.

Contact us for further information

SODAVISION

machine vision. imaging technologies.

SODA VISION PTE LTD
39, Woodlands Close, #05-61, MEGA @ Woodlands,
Singapore 737856

(+65) 6694 0389
www.sodavision.com
sales@sodavision.com



SINGAPORE

HQ, OFFICE, #VISIONLAB

39 Woodland Close, #05-61
MEGA @ Woodlands,
737856
Singapore

[Opens in Google Map](#)

e: sales@sodavision.com
t: (+65) 6694 0389



MALAYSIA

OFFICE, #VISIONLAB

1-3-5, Summerskye Square,
Jalan Sungai Tiram 8, Bayan Lepas,
11900, Pulau Pinang,
Malaysia

[Opens in Google Map](#)

e: sales@sodavision.com
t: (+604) 609 7179



THAILAND

OFFICE

No. 1687/1 Phahonyothin Road,
Chatuchak Subdistrict,
Bangkok 10900,
Thailand

[Opens in Google Map](#)

e: sales@sodavision.com
t: (+66) 2126 8141



VIETNAM

OFFICE

B9, Toong Embassy,
4th Floor N01-T4 Building, Do
Nhuan Street, Bac Tu Liem District,
Hanoi 100000, Vietnam

[Opens in Google Map](#)

e: sales@sodavision.com
t: (+84) 961 899 392

