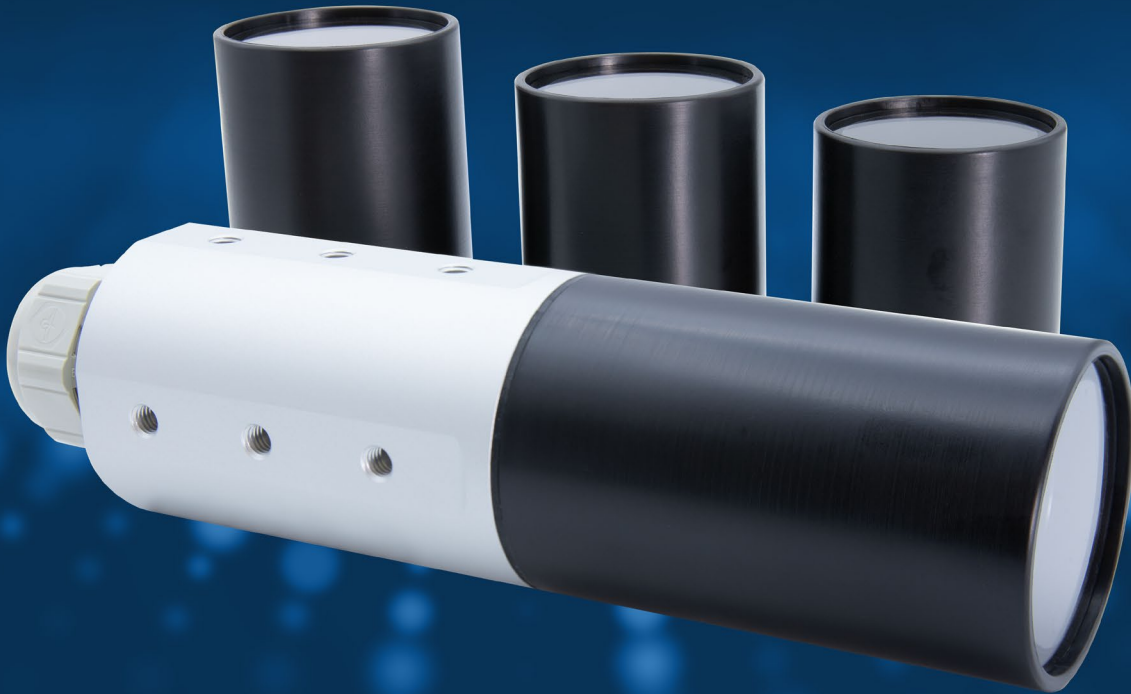


BASLER IP67 HOUSING

SODAVISION
machine vision. imaging technologies.

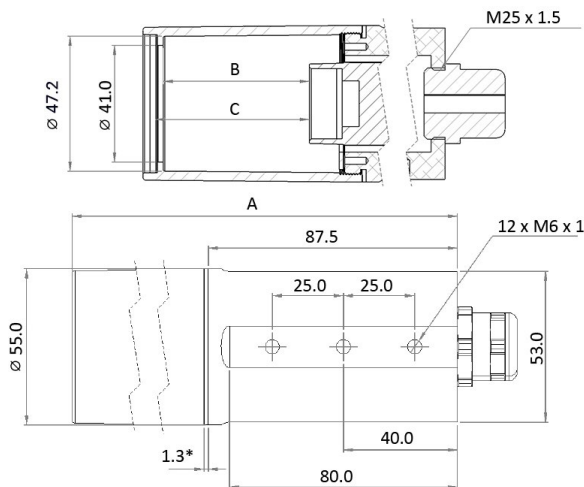


Is your vision application located in harsh environmental conditions? Then we have the right camera housing for you. Our Basler IP67 housing offers perfect protection for your Basler ace U, ace Classic & ace 2 cameras with GigE and USB 3.0 interfaces in combination with selected Basler Lenses. Having housings that protect the camera from dust, dirt, and water, plus optimal compatibility between camera, lens and cable is crucial. You can count on this compatibility with our robust IP67 housing - and at a competitive price. This housing is ideal for demanding industrial applications and is offered in various formats.

The advantages of the Basler IP67 housing at a glance:

- Dust-tight
- Waterproof
- Easy-to-use
- Time-saving
- Cost-efficient
- Modular assembly
- Robust and durable

Housing Features



* 1.3 when tightened according to instructions. 1.5 non compressed

BASLER IP67 HOUSING

Camera Compatibility	ace Classic, ace U and ace 2 with GigE or USB 3.0 interface
Lens Compatibility	max. outer diameter 47 mm; max. length 67 mm
Window Material	BK7 glass
Window Coating	AR (anti-reflective)
Body Material	Type 2 anodized aluminum
Lens Tube Material	Glass-filled nylon, high impact
Seal Material	EPDM ¹
IP Rating	IP67
Connectivity	M25 cable gland, polycarbonate
Body Diameter	55 mm
Lens Tube Diameter	55 mm
Order Numbers	for ace GigE: 2200000706, for ace USB: 2200000707 for ace 2 GigE: 2200000708, for ace 2 USB: 2200000709

¹ default option



LENS TUBE SIZE	ORDER NUMBER	TOTAL HOUSING LENGTH	INNER LENGTH		DISTANCE TO THE WINDOW	
			ace	ace 2	ace	ace 2
50 mm	2200000710	145.9 mm	31.3 mm	36.7 mm	33.9 mm	39.3 mm
60 mm	2200000711	155.9 mm	41.3 mm	46.7 mm	43.9 mm	49.3 mm
70 mm	2200000712	165.9 mm	51.3 mm	56.7 mm	53.9 mm	59.3 mm
80 mm	2200000713	175.9 mm	61.3 mm	66.7 mm	63.9 mm	69.3 mm

Connectivity



M25 CABLE GLAND	ORDER NUMBER	HOLE DIAMETER	MATERIAL
Drillable hole version	2200000968	-	Polycarbonate
Single hole version	2200000969	6.5 mm	Polycarbonate
Double hole version	2200000970	6.5 mm, 5.5 mm	Polycarbonate

For more information and a full model overview, please visit baslerweb.com/housing

©Basler AG, No. 02, 04/2021

Basler AG
Germany, Headquarters
Tel. +49 4102 463 500
sales.europe@baslerweb.com

Basler, Inc.
USA
Tel. +1 610 280 0171
sales.usa@baslerweb.com

Basler Asia Pte Ltd.
Singapore
Tel. +65 6367 1355
sales.asia@baslerweb.com

Please visit our website to find further Basler offices and representatives close to you:
baslerweb.com/sales

Contact us for further information

SODAVISION

machine vision. imaging technologies.

SODA VISION PTE LTD
39, Woodlands Close, #05-61, MEGA @
Woodlands, Singapore 737856

(+65) 6694 0389
www.sodavision.com
sales@sodavision.com



SINGAPORE

HQ, OFFICE, #VISIONLAB

39 Woodland Close, #05-61
MEGA @ Woodlands,
737856
Singapore

[Opens in Google Map](#)

e: sales@sodavision.com
t: (+65) 6694 0389



MALAYSIA

OFFICE, #VISIONLAB

1-3-5, Summerskye Square,
Jalan Sungai Tiram 8, Bayan Lepas,
11900, Pulau Pinang,
Malaysia

[Opens in Google Map](#)

e: sales@sodavision.com
t: (+604) 609 7179



THAILAND

OFFICE

No. 1687/1 Phahonyothin Road,
Chatuchak Subdistrict,
Bangkok 10900,
Thailand

[Opens in Google Map](#)

e: sales@sodavision.com
t: (+66) 2126 8141



VIETNAM

OFFICE

B9, Toong Embassy,
4th Floor N01-T4 Building, Do
Nhuan Street, Bac Tu Liem District,
Hanoi 100000, Vietnam

[Opens in Google Map](#)

e: sales@sodavision.com
t: (+84) 961 899 392

